

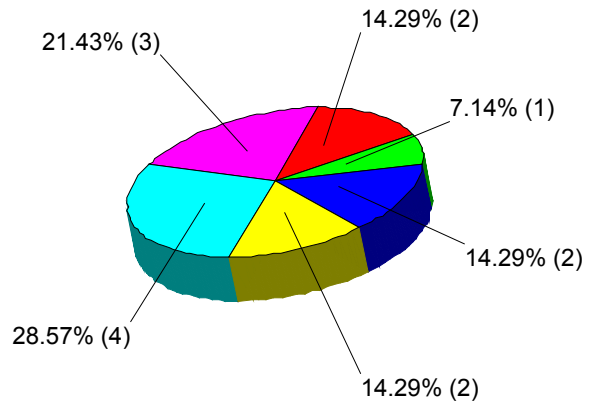
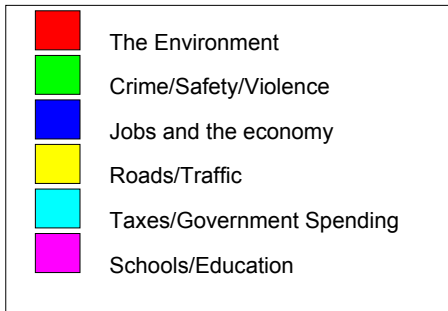
# **Living in the Triangle, April 2005 - Results**

*Published: 4/28/2005*

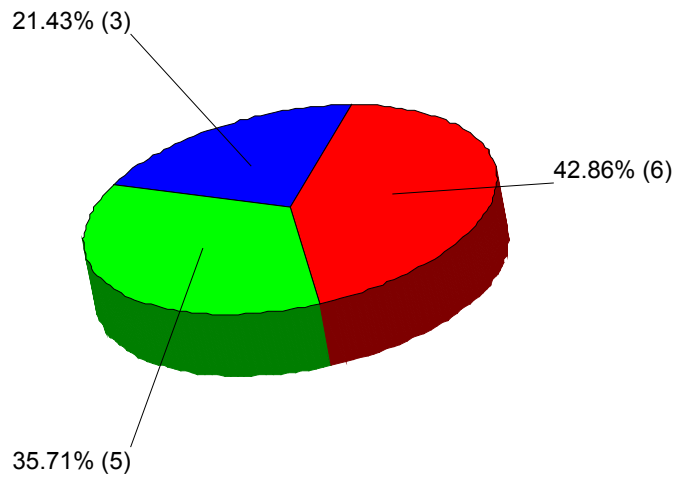
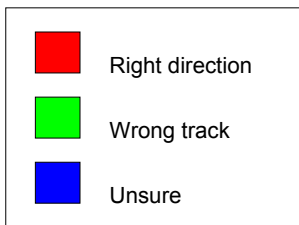
# Survey Results

## Section - Living in the Triangle

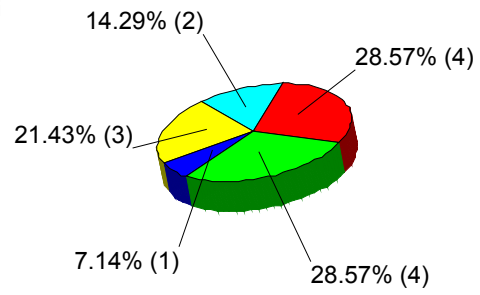
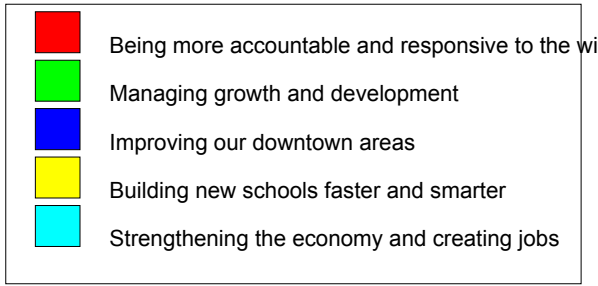
### 1. Most important issue



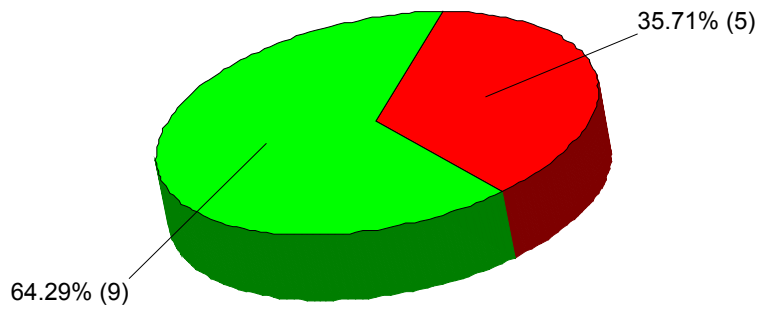
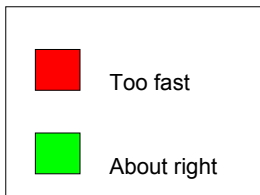
### 2. Direction of the Triangle



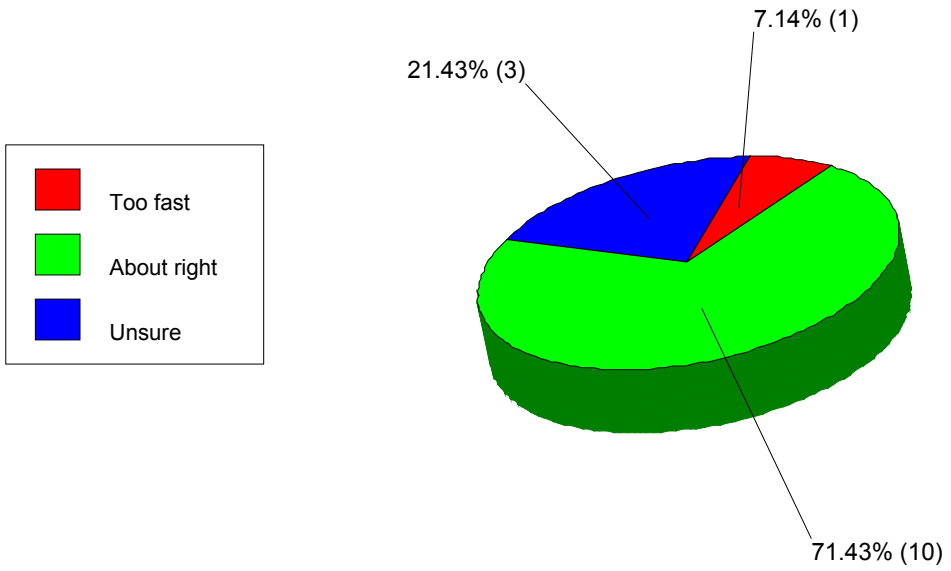
### 3. Top priority



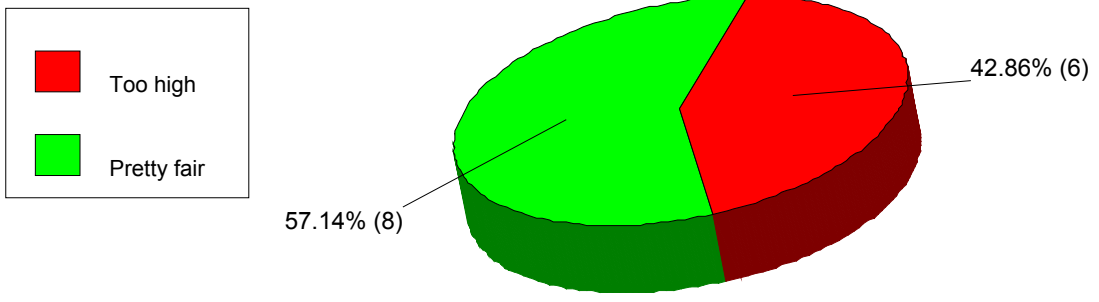
### 4. Construction growth



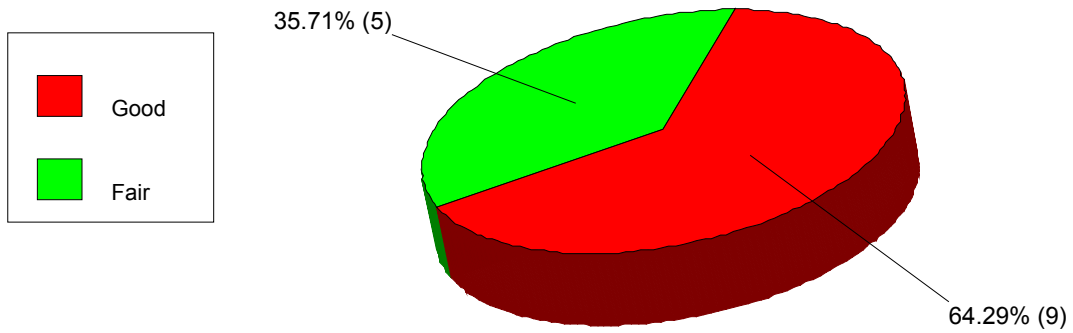
### 5. Company growth



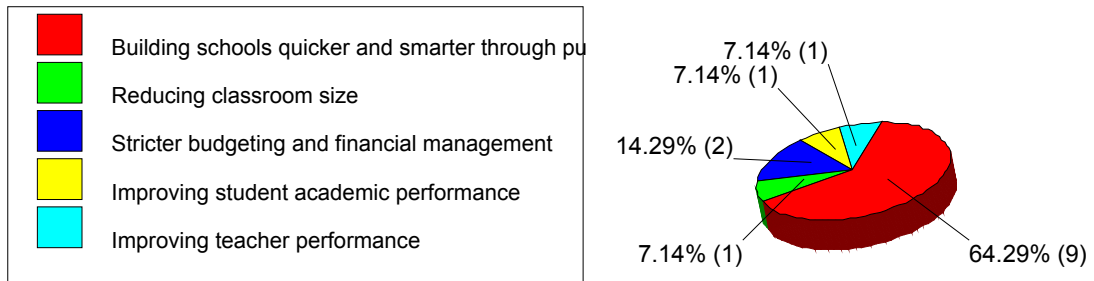
### 6. Cost of housing



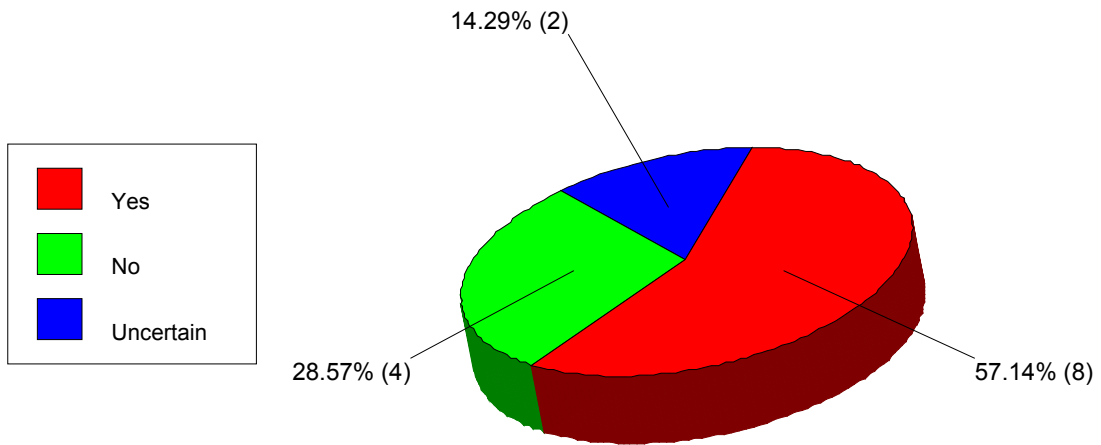
### 7. State of economy



### 8. Education priority



### 9. Sales tax increase



### 10. Impact fee

